



**Warwickshire Child  
and Family Wellbeing**

# Community Infant Feeding Team



# Service Offer

## Nuneaton, Bedworth, North Warwickshire and Rugby

Proactive offer for 1:1 infant feeding support postnatally from birth to 8 weeks, by telephone, video calls and text messaging

Weekly face to face sessions in Nuneaton, Bedworth, North Warwickshire and Rugby venues (no age limit) drop in. Staff trained in tongue function assessments

Providing evidenced based resources for parents to use at home

Breast pump loan service following assessment by a member of the Team



## South Warwickshire

Telephone/video call offer following Health Visitor only referral from birth to 8 weeks

Providing evidenced based resources for parents to use at home

*Please note families residing in the South of the county are welcome to attend drop in support groups across Nuneaton, Bedworth, North Warwickshire and Rugby*

# Support Groups

Our friendly drop in breastfeeding support groups offer face to face support for families across Warwickshire with babies who are being breastfed or bottle-fed expressed breast milk

## MONDAY

### **Atherstone**

North Warwickshire Children  
& Family Centre CV9 1JZ  
10.00am - 11.30am

## WEDNESDAY

### **Nuneaton**

Camphill Children & Family  
Centre CV10 9QA  
10.00am - 11.30am

### **Rugby**

Claremont Children & Family  
Centre CV21 3LU  
10.00am - 11.30am

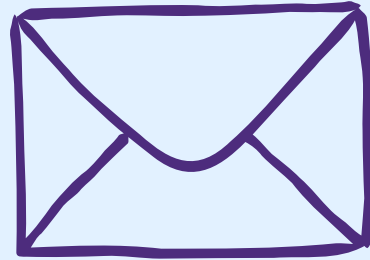
## FRIDAY

### **Bedworth**

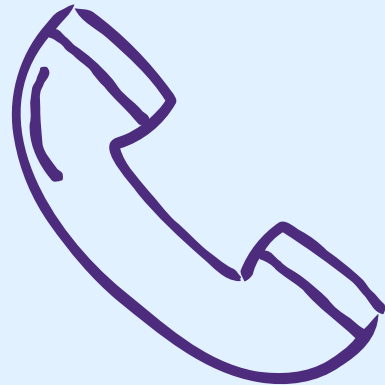
St Michael's Children &  
Family Centre CV12 9DA  
10.00am - 11.30am



# Contact Us



[wcfw.contact@hcr'gcaregroup.com](mailto:wcfw.contact@hcr'gcaregroup.com)



0300 247 0072



<https://warkschildandfamily.co.uk/>